



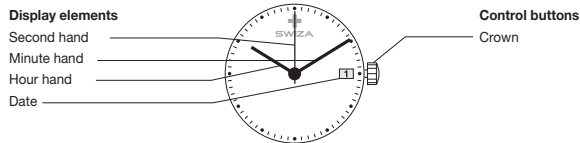
User's manual SWIZA Alza Automatic

Congratulations!

Your SWIZA Alza watch is equipped with an automatic mechanical Swiss Made movement. This movement has been meticulously designed and manufactured with the highest quality materials and components to protect it against shock, variations in temperature, water and dust.

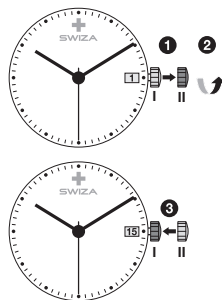
To ensure that your watch operates with perfect precision, please carefully read and adhere to the instructions included here.

Description of the display and control buttons



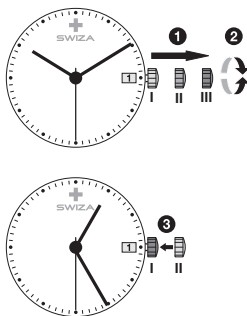
Quick-change correction for date

- 1 Pull the crown out to position II (watch still running)
- 2 Turn the crown clockwise until the desired date appears
- 3 Push the crown back into position I



Setting the time

- 1 Pull the crown out to position III (watch stopped)
- 2 *Turn the crown until the current time is displayed
- 3 Push the crown back into position I



Please note

*Please observe the 24-hour cycle

Technical information

Power reserve

Your automatic SWIZA watches draw their energy from an oscillating weight which is activated in response to the natural movements of your wrist. This weight keeps the watch wound. Automatic watches do not need a battery. The power reserve of your model is 38 hours.

Accuracy

The accuracy of a mechanical watch depends on the movements and habits of the person wearing it, and so it can vary. A SWIZA qualified watchmaker can adjust the accuracy of a watch within the SWIZA tolerance thresholds. Your Alza watch has an average accuracy tolerance of around $-12/+30$ seconds per day.

Care and maintenance

Temperature

Do not expose your watch to sudden temperature changes (exposure to sunlight followed by immersion in cold water) or extreme temperatures (over 60°C (140°F) or below 0°C (32°F)).

Shocks and impacts

Avoid thermal shocks or impacts, since they may harm your watch. In the event of a violent impact please have your watch checked by an approved SWIZA service centre.

Harmful products

Prevent your watch from coming into any direct contact with solvents, detergents, perfumes, cosmetic products etc., since they may damage the bracelet, the case or the gaskets.

Cleaning

We would advise you to clean your watch regularly (except for the leather strap) using a soft cloth and lukewarm soapy water. After immersion in salty water, rinse your watch in fresh water and leave it to dry completely.

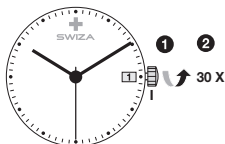
Services

Like any precision instrument, a watch must be serviced regularly for optimum operation. As a general rule, we recommend that you have your watch checked every 3 to 4 years by your approved SWIZA retailer or service centre. However, please note that depending on the climate and the conditions of use of the watch, a shorter interval may be required. To benefit from the highest standards of service and to ensure your guarantee remains in force, please always contact an approved SWIZA retailer or service centre.

Winding

Your watch must be wound manually if it has stopped or not been worn for several days, in order to ensure that your watch remains in continuous operation during periods of low activity (e.g. during sleep).

- 1 Crown in position I
- 2 Turn the crown about 30 turns forward



The automatic winding system will then ensure that the movement is fully wound if the watch is on your wrist. It is also possible to fully wind an automatic watch manually by means of the winding crown. However, please note that automatic movements have a slipping spring, which disengages the winding system (the crown can be turned infinitely) once the movement has been fully wound. Generally speaking, 80 revolutions of the crown are enough to fully wind most automatic mechanical watches.

Please note

The efficiency of the automatic winding system of a mechanical movement depends on the wrist movements of the person wearing the watch. Do not deliberately shake your automatic watch to wind it; this has no effect and could damage the watch.